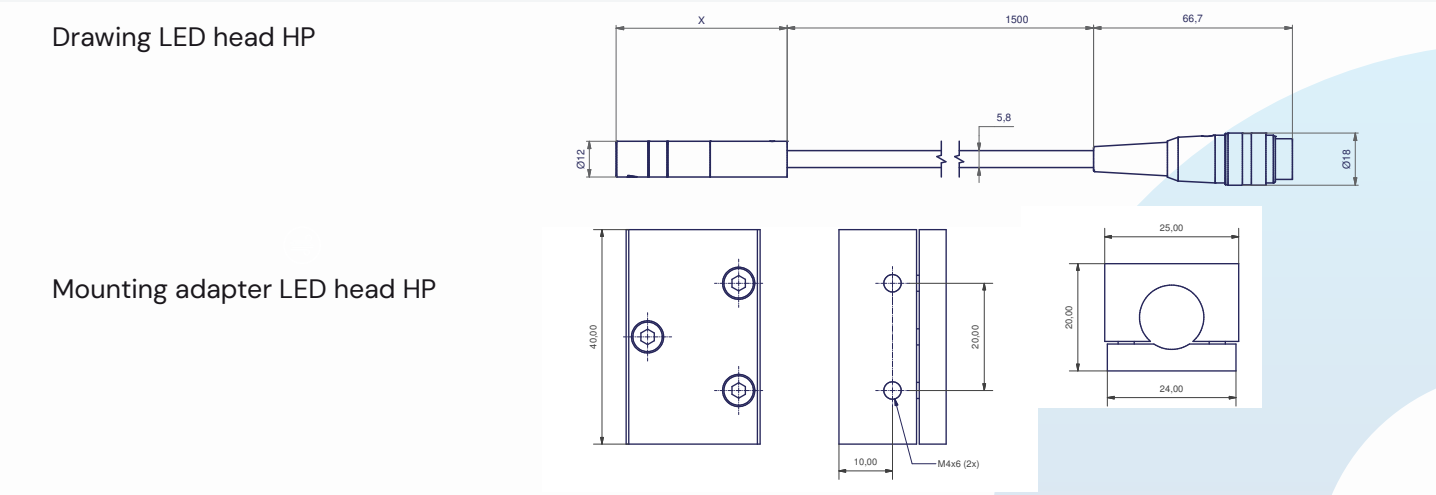


| | | | |
|-----------------------------|-------|-------|-------|
| Wavelength (nm) | 365 | 385 | 405 |
| Intensity* (mW/cm²) at 100% | 4.500 | 7.000 | 7.000 |
| Working distance (mm) | | 10 | |
| half-width, crosswise (mm) | | 2.5 | |
| half-width, lengthwise (mm) | | 10 | |

*measured with a
Hoenle UV meter
and LED light
guide sensor L2



| Lens type | Length LED head HP (x) in mm |
|------------|------------------------------|
| Optic 3 | 55.9 |
| Optic 7 | 57.3 |
| Optic 10 | 54.5 |
| Optic 20 | 52.5 |
| Optic 10x2 | 55.4 |

BLUEPOINT LED



LED POINT SOURCE WITH
PROCESS FLOW CONTROL

4 LED HEADS PER
CONTROL UNIT

5 CONTROL UNITS
CAN BE STACKED
20 LED HEADS
COMBINABLE

Hoenle AG
Nicolaus-Otto-Str. 2
82205 Gilching
Germany

Phone: +49 8105 2083-0
adhesivesystems@hoenle.com

www.hoenle.com



Operating parameters depend on production characteristics and may differ from the foregoing information. We reserve the right to modify technical data.
© Copyright Hoenle AG. Updated 09/25

www.techsil.co.uk

BLUEPOINT LED

FEATURES

- Compact control unit
- Removable touch display, suitable for mounting on production machine
- Operation of up to 20 LED heads
- Various optical lenses available
- Intensity up to 20.000 mW/cm²
- Available wavelengths 365/385/405nm
- Intelligent power control
- Power setting from 10% – 100%
- Input of complete program sequences thanks to Process Flow Control (PFC). Six different programs possible.

LED CONTROL

- RS232 interface for external control and transmission of exposure parameters
- Optional: Control via Profinet

MANUAL

The UV-LEDs can be controlled manually on the touch display with selectable password protection

PLC INTERFACE

For switching on, monitoring and status feedback of the LEDs. External analog input for each LED head separately for individual power setting. Release contact with safe switch-off of the LEDs in accordance with current safety guidelines.

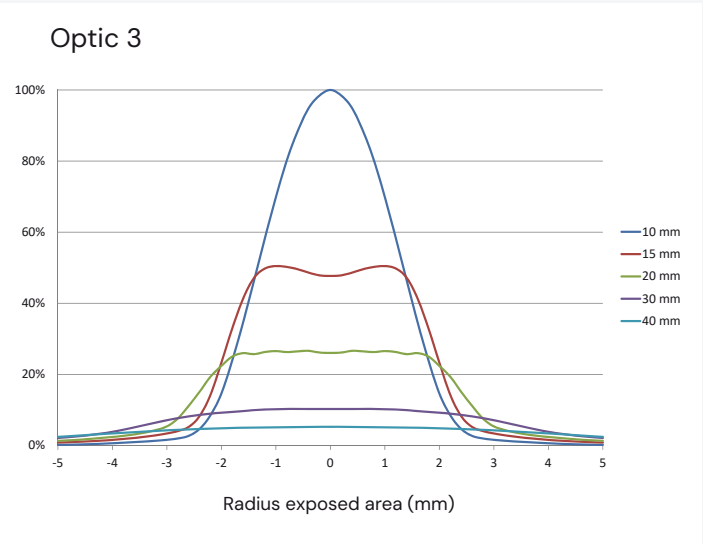
ACCESSORIES

- The functional range of the bluepoint LED can be extended by using optional accessories::
- Adapter for 90° beam deflection for use in narrow space
 - Extension cable in different lengths
 - Adapter to operate up to four foot switches per control unit

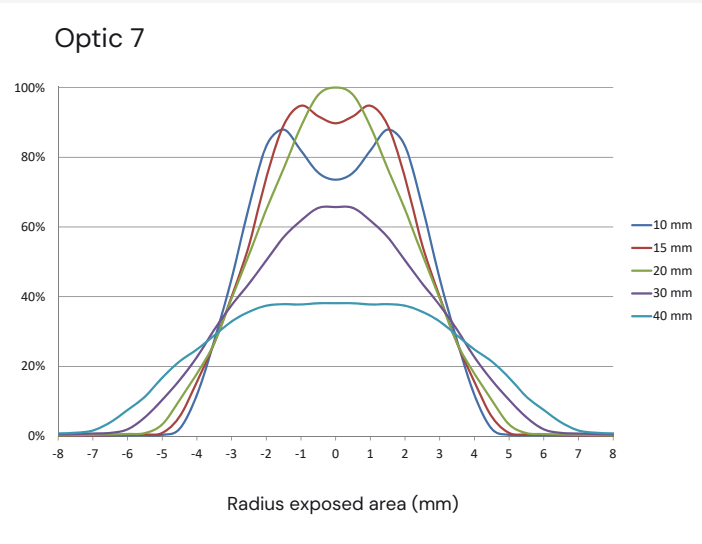
TECHNICAL DATA

| | |
|--------------------|---------------------------|
| LED service life | > 20.000 hours |
| Intensity | up to 20.000 mW/cm² |
| Wavelengths | 365, 385, 405 nm +/-10 nm |
| Power supply | 20 V – 28 V DC |
| Max. input current | 3,5 A per controller |

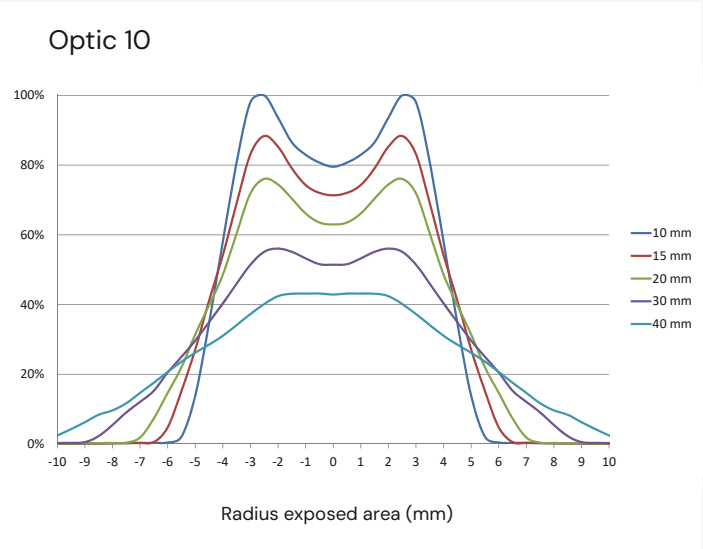
LENS TYPES FOR BLUEPOINT LED



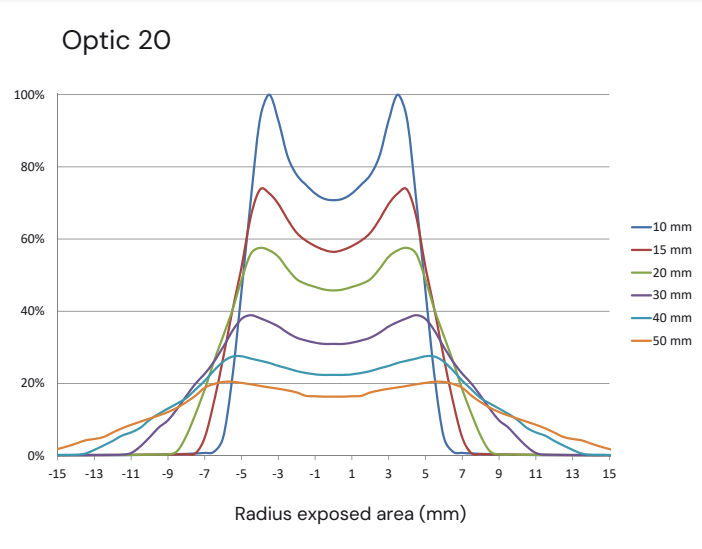
| | | | |
|---------------------------------|--------|--------|--------|
| Wavelength (nm) | 365 | 385 | 405 |
| Intensity* (mW/cm²) at 100% | 14.000 | 20.000 | 20.000 |
| Working distance (mm) | 10 | | |
| Full-width at half maximum (mm) | 3 | | |



| | | | |
|---------------------------------|-------|-------|-------|
| Wavelength (nm) | 365 | 385 | 405 |
| Intensity* (mW/cm²) at 100% | 4.000 | 4.800 | 3.800 |
| Working distance (mm) | 10 | | |
| Full-width at half maximum (mm) | 7 | | |



| | | | |
|---------------------------------|-------|-------|-------|
| Wavelength (nm) | 365 | 385 | 405 |
| Intensity* (mW/cm²) at 100% | 2.000 | 2.600 | 2.400 |
| Working distance (mm) | 20 | | |
| Full-width at half maximum (mm) | 10 | | |



| | | | |
|---------------------------------|-------|-------|-------|
| Wavelength (nm) | 365 | 385 | 405 |
| Intensity* (mW/cm²) at 100% | 1.450 | 1.850 | 1.650 |
| Working distance (mm) | 40 | | |
| Full-width at half maximum (mm) | 20 | | |

*measured with a Hoenle UV meter and LED light guide sensor L2