

Shaped Hot Melt

Adhesives Guide



www.techsil.co.uk

Main Tel: +44 (0)1268 885800 | Sales Tel: +44 (0)1268 885801 | Email: sales@poweradhesives.com | www.poweradhesives.com

Working together to create long lasting bonds.

Power Adhesives manufactures a large range of shaped hot melt adhesives that are designed to be used with the Tec range of adhesive applicators, providing a high-performance, cost-effective application system.

Tecbond adhesives are used in almost all industries, including packaging, woodworking, construction, product assembly, electrical, automotive and flooring.









Selecting the correct adhesive for an application depends on a range of factors, including substrates, application requirements and cost.

This guide is designed to aid the selection process by highlighting the key applications of each adhesive, and then listing the relevant data such as open time, viscosity and heat resistance so the adhesives can be compared and short listed for testing, based on the application.

Our tech services are always available to discuss any application requirements in more detail. If you can't find what you're looking for, contact us to find out more about our full range of Tecbond shaped and bulk hot melt adhesives, or speak to us about developing a bespoke hot melt to suit your requirements.



Key for adhesive guide

-  **Chemistry**
The polymer the adhesive is based on.
-  **Temperature**
Temperature at which the adhesive should be applied.
-  **Open Time**
Time available after application to make a bond.
-  **Low Temp**
Temperature at which the adhesive becomes brittle.
-  **Softening Point**
(SP) Temperature at which adhesive starts to become molten.
-  **Heat Resistance**
(HR) A guide to the heat resistance of the adhesive bond.
-  **Viscosity**
Indication of how much the adhesive flows.
-  **Colour**
The colour of the adhesive.

Scan for
more information



Please be aware that some test readings can fluctuate based on the size and form of the adhesive.

www.techsil.co.uk




Packaging & Print

Featuring a selection of bio-based and biodegradable solutions, our packaging hot melts enhance packaging & print operations, offering increased efficiency, secure bonds and fast setting speeds. We provide solutions that work with every type of packaging material, including heat-sensitive substrates such as foams or expanded polystyrene.



Reference	Sizes (mm)	Uses	Chemistry	Open Time	Viscosity / cPs	SP / °C	HR / °C	Low Temp / °C	Colour
1X	12, 43	Low viscosity wood working & packaging adhesive.	EVA	20 seconds	3500 @ 180°C	95	75	20	Pale Amber
14	12, 15, 43	Very fast setting, high delivery rate box & carton closing adhesive (40% sustainable bio based).	EVA	<10 seconds	2000 @ 180 °C	113	85	0	Pale Amber
210	12	Clear, fast setting hot melt adhesive designed to create temporary bonds that are easily removable.	Rubber	<10 seconds	6000 @ 180 °C	150	120	-70	Off White
214	12, 15, 43	Economical packaging adhesive designed for use on most paper & board substrates. Made with 45% bio based materials.	EVA	10 seconds	4000 @ 180 °C	102	75	0	Pale Amber
214B	12, 15, 43	Biodegradable packaging adhesive designed for use on most paper & board substrates. Made with 45% bio based materials.	EVA	10 seconds	4000 @ 180 °C	102	75	0	Pale Amber
265	43	High-performance packaging & product assembly adhesive designed to bond UV-varnished board & card.	Acrylic	30 seconds	3500 @ 180 °C	117	60	-10	Amber
342	12, 43	Packaging adhesive with very high instant grab for Triwall & other stiff boards.	EVA	10 seconds	8500 @ 180 °C	100	75	10	White
345	12, 43	Packaging adhesive with versatile adhesion for difficult surfaces including UV varnish - suitable for deep freeze applications.	PO	20 seconds	3000 @ 180 °C	106	80	-40	White
410	43	Sprayable hot melt adhesive with low tack to aid in easy removal - designed for pallet stabilisation.	PO	30 seconds	3500 @ 180 °C	125	85	-10	Off White
1942	12, 43	Packaging & woodworking adhesive able to bond wood & many plastics including ABS, nylon & PVC.	EVA	10 seconds	5000 @ 180 °C	99	80	-10	Amber
LM41	7, 12, 15, 43	Clear, high strength, all-purpose adhesive, formulated for use in low melt adhesive applicators.	EVA	1 minute 30 seconds	12000 @ 130 °C	100	85	10	Clear
LM42	12	Economical general-purpose adhesive - formulated for use in low melt adhesive applicators.	EVA	40 seconds	9000 @ 130 °C	85	70	-10	White
LM46	12, 15, 43	Fast-setting packaging adhesive for use in low melt applicators.	EVA	20 seconds	13000 @ 130 °C	88	80	10	White

Can't find what you're looking for? Contact us to find out more about our full range of Tecbond shaped and bulk hot melt adhesives, or speak to us about developing a bespoke hot melt to suit your requirements.

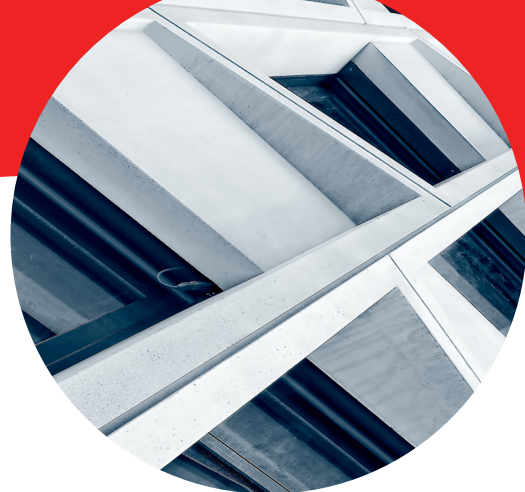
 **Glue Size Converter**

12mm - ½", 15mm - ⅝", 43mm - 1¾"

www.techsil.co.uk



From specialist precast adhesives through to plasterboard bonding, our hot melts are ideal for use across the construction industry. Available in larger shaped formats and unique sprayable formulations, our adhesives stand as the reliable, cost-effective and user-friendly alternatives to many other fixing systems.



Reference	Sizes (mm)	Uses	Chemistry	Open Time	Viscosity / cPs	SP / °C	HR / °C	Low Temp / °C	Colour
1X	12, 43	Low viscosity wood working & packaging adhesive.	EVA	20 seconds	3500 @ 180°C	95	75	20	Pale Amber
5	12, 15, 43	Woodworking & carpentry adhesive with low viscosity for tighter joints.	EVA	10 seconds	1400 @ 180 °C	105	70	0	Pale Amber
23	12, 15, 43	Multi-purpose product assembly adhesive designed for use on fabrics, ceramics, hard & soft woods.	EVA	30 seconds	5000 @ 180 °C	88	80	0	Pale Amber
213	12, 15, 43	General-purpose hot melt adhesive designed to bond substrates commonly used in flooring & carpet fitting applications.	EVA	30 seconds	6000 @ 180 °C	90	80	10	Pale Amber
238	12	Cable tacking & PVC specialist adhesive designed as a replacement for tacks, screws, & cable clips.	Acrylic	50 seconds	10000 @ 180 °C	85	70	-10	Crystal Clear
248	12, 15, 43	All-purpose construction & repair adhesive, suitable for a range of building materials & many plastics.	Acrylic	60 seconds	5000 @ 180 °C	90	75	-10	Clear
260	12, 15, 43	High strength product assembly adhesive that delivers flexible final bonds.	EVA	30 seconds	6000 @ 180 °C	90	70	0	Pale Amber
261	12, 15, 43	Versatile & strong product assembly adhesive with the ability to bond a variety of substrates.	EVA	30 seconds	2500 @ 180 °C	85	75	0	Pale Amber
266	43	Polyolefin-based adhesive specifically designed for use on difficult to bond plastics such as polypropylene & polyethylene.	PO	40 seconds	8000 @ 180 °C	115	85	20	Pale Amber
267	43	Product assembly adhesive designed to bond most polyolefin plastics.	PO	40 seconds	3000 @ 180 °C	150	80	10	Pale Amber
267W	15	Product assembly adhesive designed to bond most polyolefin plastics.	PO	30 seconds	4000 @ 180 °C	150	105	0	White
280	12, 43	High-performance, long open time adhesive designed for use in construction & product assembly applications.	PO	4 minutes	3300 @ 180 °C	81	70	-20	Pale Amber
420	43	Sprayable general-purpose adhesive, primarily used in the manufacture of mattresses & HVAC units.	PO	3 minutes	4500 @ 180 °C	105	85	0	Off White
425	43	Sprayable general-purpose adhesive, suitable for use on wood, many plastics & heat-sensitive materials.	PO	3 minutes	3000 @ 180 °C	105	80	10	Dark Amber
430	43	Sprayable adhesive with high instant tack & longer open time. For use on foams, wood, boards, & some plastics.	PO	6 minutes	4500 @ 180 °C	102	90	20	Off White
440	43	Sprayable hot melt adhesive for product assembly & tough packaging applications.	PO	6 minutes	4200 @ 180°C	105	85	0	Off White
523	15, 43	General-purpose plasterboard & drywall adhesive.	EVA	30 seconds	4800 @ 180°C	92	80	20	Pale Amber
550	43	Long working time plasterboard & drywall adhesive.	EVA	10 seconds	1500 @ 180°C	105	70	0	Pale Amber
561	43	Shock-resistant plasterboard & drywall adhesive.	EVA	30 seconds	2400 @ 180°C	85	75	0	Pale Amber
1942	12, 43	Packaging & woodworking adhesive able to bond wood & many plastics including ABS, nylon & PVC.	EVA	10 seconds	5000 @ 180 °C	99	80	-10	Amber
7714	12	Product assembly adhesive for applications where high & low temperature resistance is required.	Polyamide	10 seconds	6000 @ 190°C	117	100	-10	Amber
LM41	7, 12, 15, 43	Clear, high strength, all-purpose adhesive, formulated for use in low melt adhesive applicators.	EVA	1 minute 30 seconds	12000 @ 130 °C	100	85	10	Clear

Can't find what you're looking for? Contact us to find out more about our full range of Tecbond shaped and bulk hot melt adhesives, or speak to us about developing a bespoke hot melt to suit your requirements.

Glue Size Converter

12mm - ½", 15mm - ⅝", 43mm - 1¾"



Industrial & Manufacturing

Drive efficiency in manufacturing with our hot melt adhesive solutions for diverse industries. With formulations covering applications from low-volume over moulding, through to large scale manufacturing jobs such as wind turbine construction and engine casting, our hot melts help companies to increase output, whilst cutting down on production costs.



Reference	Sizes (mm)	Uses	Chemistry	Open Time	Viscosity / cPs	SP / °C	HR / °C	Low Temp / °C	Colour
5	12, 15, 43	Woodworking & carpentry adhesive with low viscosity for tighter joints.	EVA	10 seconds	1400 @ 180 °C	105	70	0	Pale Amber
263	12	Product assembly adhesive designed to bond polypropylene.	PO	10 seconds	15550 @ 180 °C	150	95	-30	Pale Amber
420	43	Sprayable general-purpose adhesive, primarily used in the manufacture of mattresses & HVAC units.	PO	3 minutes	4500 @ 180 °C	105	85	0	Off White
425	43	Sprayable general-purpose adhesive, suitable for use on wood, many plastics & heat-sensitive materials.	PO	3 minutes	3000 @ 180 °C	105	80	10	Dark Amber
430	43	Sprayable adhesive with high instant tack & longer open time. For use on foams, wood, boards, & some plastics.	PO	6 minutes	4500 @ 180 °C	102	90	20	Off White
440	43	Sprayable hot melt adhesive for product assembly & tough packaging applications.	PO	6 minutes	4200 @ 180°C	105	85	0	Off White
7718	12, 15	Low viscosity potting & encapsulation adhesive tested to UL 94 V0 fire retardancy rating.	Polyamide	20 seconds	1000 @ 190 °C	160	115	10	Amber & Black
7784	12, 15, 43	Temperature resistant product assembly adhesive designed for use on metal, wood, glass, ceramics, & many plastics.	Polyamide	30 seconds	6000 @ 190 °C	135	120	-60	Amber
7785	12, 15, 43	Chemical resistant hot melt for applications where fuel & oil resistance is required (filter manufacture).	Polyamide	10 seconds	5500 @ 190 °C	155	135	-10	Amber
7786	12, 15	Polyamide hot melt adhesive for overmoulding, designed with class-leading high and low temperature resistances and tested to UL 94 V0 fire retardancy rating.	Polyamide	<10 seconds	4800 @ 190 °C	155	145	-40	Black
LM41	7, 12, 15, 43	Clear, high strength, all-purpose adhesive, formulated for use in low melt adhesive applicators.	EVA	1 minute 30 seconds	12000 @ 130 °C	100	85	10	Clear

Can't find what you're looking for? Contact us to find out more about our full range of Tecbond shaped and bulk hot melt adhesives, or speak to us about developing a bespoke hot melt to suit your requirements.

 **Glue Size Converter**

12mm - ½", 15mm - ⅝", 43mm - 1¾"

www.techsil.co.uk



Product Assembly

The foundation of many commercial products, our solutions have been redefining the assembly of both mass-produced and custom products. Present in everyday household equipment and automotive interiors, our adhesives empower manufacturers to streamline production by reducing the need for specialized adhesives and tools. Our versatile formulations can be used across a wide range of applications, making them an essential component in modern manufacturing.



Reference	Sizes (mm)	Uses	Chemistry	Open Time	Viscosity / cPs	SP / °C	HR / °C	Low Temp / °C	Colour
23	12, 15, 43	Multi-purpose product assembly adhesive designed for use on fabrics, ceramics, hard & soft woods.	EVA	30 seconds	5000 @ 180 °C	88	80	0	Pale Amber
213	12, 15, 43	General-purpose hot melt adhesive designed to bond substrates commonly used in flooring & carpet fitting applications.	EVA	30 seconds	6000 @ 180 °C	90	80	10	Pale Amber
232	7, 12, 15, 43	Clear general-purpose hot melt adhesive designed to provide excellent adhesion to fabrics.	EVA	30 seconds	10000 @ 180 °C	87	80	-30	Clear
242	12	Crystal clear, high-performance product assembly adhesive - high viscosity.	EVA	30 seconds	14000 @ 180 °C	82	80	-20	Clear
246	12	High viscosity hot melt adhesive formulated for use in PDR (Paintless Dent Repair) applications.	EVA	40 seconds	12000 @ 180 °C	86	75	-10	Clear & Black
248	12, 15, 43	All-purpose construction & repair adhesive, suitable for a range of building materials & many plastics.	Acrylic	60 seconds	5000 @ 180 °C	90	75	-10	Clear
260	12, 15, 43	High strength product assembly adhesive that delivers flexible final bonds.	EVA	30 seconds	6000 @ 180 °C	90	70	0	Pale Amber
261	12, 15, 43	Versatile & strong product assembly adhesive with the ability to bond a variety of substrates.	EVA	30 seconds	2500 @ 180 °C	85	75	0	Pale Amber
263	12	Product assembly adhesive designed to bond polypropylene.	PO	10 seconds	15550 @ 180 °C	150	95	-30	Pale Amber
265	43	High-performance packaging & product assembly adhesive designed to bond UV-varnished board & card.	Acrylic	30 seconds	3500 @ 180 °C	117	60	-10	Amber
266	43	Polyolefin-based adhesive specifically designed for use on difficult to bond plastics such as polypropylene & polyethylene.	PO	40 seconds	8000 @ 180 °C	115	85	20	Pale Amber
267	43	Product assembly adhesive designed to bond most polyolefin plastics.	PO	40 seconds	3000 @ 180 °C	150	80	10	Pale Amber
267W	15	Product assembly adhesive designed to bond most polyolefin plastics.	PO	30 seconds	4000 @ 180 °C	150	105	0	White
280	12, 43	High-performance, long open time adhesive designed for use in construction & product assembly applications.	PO	4 minutes	3300 @ 180 °C	81	70	-20	Pale Amber
345	12, 43	Packaging adhesive with versatile adhesion for difficult surfaces including UV varnish - suitable for deep freeze applications.	PO	20 seconds	3000 @ 180 °C	106	80	-40	White
420	43	Sprayable general-purpose adhesive, primarily used in the manufacture of mattresses & HVAC units.	PO	3 minutes	4500 @ 180 °C	105	85	0	Off White
425	43	Sprayable general-purpose adhesive, suitable for use on wood, many plastics & heat-sensitive materials.	PO	3 minutes	3000 @ 180 °C	105	80	10	Dark Amber
430	43	Sprayable adhesive with high instant tack & longer open time. For use on foams, wood, boards, & some plastics.	PO	6 minutes	4500 @ 180 °C	102	90	20	Off White
440	43	Sprayable hot melt adhesive for product assembly & tough packaging applications.	PO	6 minutes	4200 @ 180 °C	105	85	0	Off White
7714	12	Product assembly adhesive for applications where high & low temperature resistance is required.	Polyamide	10 seconds	6000 @ 190 °C	117	100	-10	Amber
7718	12, 15	Low viscosity potting & encapsulation adhesive tested to UL 94 V0 fire retardancy rating.	Polyamide	20 seconds	1000 @ 190 °C	160	115	10	Amber & Black
7784	12, 15, 43	Temperature resistant product assembly adhesive designed for use on metal, wood, glass, ceramics, & many plastics.	Polyamide	30 seconds	6000 @ 190 °C	135	120	-60	Amber
7785	12, 15, 43	Chemical resistant hot melt for applications where fuel & oil resistance is required (filter manufacture).	Polyamide	10 seconds	5500 @ 190 °C	155	135	-10	Amber
7786	12, 15	Polyamide hot melt adhesive for overmoulding, designed with class-leading high and low temperature resistances and tested to UL 94 V0 fire retardancy rating.	Polyamide	<10 seconds	4800 @ 190 °C	155	145	-40	Black
LM41	7, 12, 15, 43	Clear, high strength, all-purpose adhesive, formulated for use in low melt adhesive applicators.	EVA	1 minute 30 seconds	12000 @ 130 °C	100	85	10	Clear
LM42	12	Economical general-purpose adhesive - formulated for use in low melt adhesive applicators.	EVA	40 seconds	9000 @ 130 °C	85	70	-10	White

Can't find what you're looking for? Contact us to find out more about our full range of Tecbond shaped and bulk hot melt adhesives, or speak to us about developing a bespoke hot melt to suit your requirements.

Glue Size Converter

12mm - ½", 15mm - ⅝", 43mm - 1¾"



Our hot melt adhesives allow DIYers to unlock the potential of their projects. Offering versatility and unrivalled bond strength, we empower users to let their creativity flow, removing the issues they face when using traditional solvent or water-based glues. In many areas, our adhesives can even replace the use of nails and screws to achieve a seamless finish.



Reference	Sizes (mm)	Uses	Chemistry	Open Time	Viscosity / cPs	SP / °C	HR / °C	Low Temp / °C	Colour
5	12, 15, 43	Woodworking & carpentry adhesive with low viscosity for tighter joints.	EVA	10 seconds	1400 @ 180 °C	105	70	0	Pale Amber
23	12, 15, 43	Multi-purpose product assembly adhesive designed for use on fabrics, ceramics, hard & soft woods.	EVA	30 seconds	5000 @ 180 °C	88	80	0	Pale Amber
213	12, 15, 43	General-purpose hot melt adhesive designed to bond substrates commonly used in flooring & carpet fitting applications.	EVA	30 seconds	6000 @ 180 °C	90	80	10	Pale Amber
232	7, 12, 15, 43	Clear general-purpose hot melt adhesive designed to provide excellent adhesion to fabrics.	EVA	30 seconds	10000 @ 180 °C	87	80	-30	Clear
238	12	Cable tacking & PVC specialist adhesive designed as a replacement for tacks, screws, & cable clips.	Acrylic	50 seconds	10000 @ 180 °C	85	70	-10	Crystal Clear
239	12, 15, 43	High viscosity crystal clear hot melt adhesive for DIY & recreational applications.	EVA	40 seconds	14500 @ 180 °C	84	70	-30	Clear
240	7, 12, 15, 43	Versatile & cost-effective all-purpose adhesive - suitable for hot & low melt applicators.	EVA	30 seconds	7500 @ 180 °C	87	80	-10	Clear
242	12	Crystal clear, high-performance product assembly adhesive - high viscosity.	EVA	30 seconds	14000 @ 180 °C	82	80	-20	Clear
248	12, 15, 43	All-purpose construction & repair adhesive, suitable for a range of building materials & many plastics.	Acrylic	60 seconds	5000 @ 180 °C	90	75	-10	Clear
280	12, 43	High-performance, long open time adhesive designed for use in construction & product assembly applications.	PO	4 minutes	3300 @ 180 °C	81	70	-20	Pale Amber
LM41	7, 12, 15, 43	Clear, high strength, all-purpose adhesive, formulated for use in low melt adhesive applicators.	EVA	1 minute 30 seconds	12000 @ 130 °C	100	85	10	Clear
LM42	12	Economical general-purpose adhesive - formulated for use in low melt adhesive applicators.	EVA	40 seconds	9000 @ 130 °C	85	70	-10	White
LM46	12, 15, 43	Fast-setting packaging adhesive for use in low melt applicators.	EVA	20 seconds	13000 @ 130 °C	88	80	10	White

Can't find what you're looking for? Contact us to find out more about our full range of Tecbond shaped and bulk hot melt adhesives, or speak to us about developing a bespoke hot melt to suit your requirements.



Glue Size Converter

12mm - ½", 15mm - ⅝", 43mm - 1¾"

www.techsil.co.uk

Scan to visit our adhesives guide



Distributor Contact Details

TECHSiL®



Power Adhesives Ltd.

1 Lords Way, Basildon, Essex, England, SS13 1TN

Main Tel: +44 (0)1268 885800

Sales Tel: +44 (0)1268 885801

Email: sales@poweradhesives.com

www.poweradhesives.com